

**Welcome To
Peel Language
Development School**



LETTER FROM THE PRINCIPAL



On behalf of our school community I would like to warmly welcome you to Peel Language Development School. We look forward to getting to know your child and your family in our education journey over the coming years.

I would also like to congratulate you on being an advocate for your child's pathway to a successful future. Forming positive partnerships with parents is a strong focus for our school and is important in your child's educational journey at PLDS. Your involvement in volunteering, attending meetings and supporting school events will support your child's success and strengthen our school community.

Peel Language Development School commenced service in 2002 and has been a leader in the development of educational programs for children with a Developmental Language Disorder (DLD). Our school caters for students from Kindergarten to Year 3 and our highly qualified staff provide an early intervention program with a strong focus on developing language and literacy skills within the West Australian Curriculum. Our Education Assistants work alongside Teachers, providing valuable classroom support on a daily basis. We also benefit from the services of a Speech Pathology Team to plan and implement our intervention programs.

The Administration campus is co-located with Rockingham Lakes Primary School in Port Kennedy. PLDS also has co-located campuses at Mandurah, Pinjarra, and Bungaree Primary Schools. The concept of a 'school within a school' is unique within the educational landscape of Western Australia and has many benefits to the students who attend our school. We foster co-operation and collaboration between our host school communities which provides opportunities for an integrated and inclusive school environment. At PLDS we provide an inclusive learning environment that caters for the diversity of the students in our care.

At our Induction Meeting you will have the opportunity to meet our dedicated team, hear about the programs we provide and ask any questions about your child's enrolment at PLDS. You will also have the opportunity to tour the school and visit classes to see our programs in action.

At any time during your child's enrolment at PLDS, we are here to help and support your child's pastoral care and education. You can also support this process by establishing positive relationships with your child's Teacher and Education Assistant and contacting us promptly so together, we can work through any issues that may arise. We continue this support when the time comes for your child to exit from our program via our Transition program.

Once again, I would like to extend a warm welcome to your child and your family and we look forward to welcoming you into our school community.

A handwritten signature in black ink, appearing to read 'Fiona Forbes', written in a cursive style.

Fiona Forbes
Principal



Connect and Respect Expectations

Our schools are committed to providing quality education to all students in a safe, inclusive and caring learning environment. We value working together with parents and families as critical partners in student learning outcomes.

Schools draw on the diversity and strengths of local communities to create opportunities to work collaboratively and set directions for students. Building mutually respectful relationships with each local community is fundamental to this.

A school community contains a wide variety of individuals and groups who strive to work together to educate students to become confident, well-educated young people; prepared to lead happy, successful lives and make contributions to local and global communities.

School staff will engage with families to understand the interests, personalities and needs of their children. All students need access to a quality education within safe and secure learning environments, and with the right supports to progress and achieve.

There may be times during your child's schooling when additional support is needed, or issues arise. Your school will support you and your child to productively resolve these issues and we encourage you to raise concerns as early as possible.

Shared and respectful expectations and values will enable us to work together in the best interests of our children.

What parents and carers can expect from our schools

Communication between you and your school is an important part of your child's education. School communities thrive on open communication wherein staff, students, parents and carers have opportunities to share good news, discuss issues and maintain an open dialogue.

Schools are made up of hard-working and dedicated professionals who will listen, care and respond to your concerns and work with you to resolve complaints. We have found over time even the most challenging of circumstances can be worked through. You can expect some of the following from your school:

- regular communication through school approved channels
- reports on your child's progress and achievement
- celebration of your child's achievements
- notification of any serious single issue or ongoing issues concerning your child
- scheduled opportunities to meet with the classroom teacher
- other opportunities to meet with the teacher, by appointment
- updates about important developments in your child's class
- notifications or invitations to school events
- opportunities to provide respectful and productive feedback

All students need access to a quality education within safe and secure learning environments.

What parents and carers should not expect from our schools

Our staff have families and personal lives too, and like all professionals, work at their best when they have a quality work-life balance. Parents and carers should not expect:

- school staff to return calls after work hours
- emails to be answered in the evenings or weekends
- access to teachers' private phone numbers or emails
- staff to meet with parents and carers, without an appointment, during a school day
- to be allowed on a school site if you have harassed or been aggressive towards school staff.

You should contact your child's school if:

- you have concerns about your child's academic or social progress
- medical issues arise or diagnosis changes
- there are changes in family circumstances
- there are safety issues or changes in behaviour at home
- social issues arise that could impact the safety and welfare of students at the school
- you want to make or reschedule an appointment.

Communication that interferes with teaching and learning

- speaking to staff disrespectfully or aggressively, especially in front of your child or other students
- expecting to meet with staff during the school day without an appointment
- visiting the classroom during the teacher's preparation time before school
- using social media platforms inappropriately and disrespectfully
- malicious or judgmental gossip
- By everyone playing a part in providing safe, positive learning environments and opportunities for our students, we enable them to be the best they can be.

Communication methods

Electronic communication, such as email, is appropriate for short, non-urgent and positive forms of communication. It is not appropriate for more complex or emotional situations. In these cases, parents should request a face-to-face meeting so that issues can be given the time and attention they deserve. If in doubt, speak to your school.

Concerns and complaints

Contact your school as early as possible if you have concerns. If you are not sure who to speak to, you can start with your child's teacher. For some matters, it may be appropriate to talk directly to your child's year coordinator, school administration staff or principal.

If you have approached your child's school but haven't been able to resolve the issue, refer to our complaints process to explore your options education.wa.edu.au/complaints.

Shared and respectful expectations and values will enable us to work together in the best interests of our children.

Connect and Respect Engagement

Expectations that promote learning, wellbeing and safety in all public schools in Western Australia.

Together we make a difference. We welcome parents and other members of our diverse community into schools across Western Australia. Student learning is strengthened when school staff, parents and carers are actively and positively involved in their education.

We all share a responsibility for providing a safe, supportive and productive environment, free from bullying, harassment, discrimination and violence.

Parents and carers and other visitors to schools support safety by ensuring communication and conduct at school and school activities is respectful. Every student, staff member, parent or carer has the right to feel safe and be safe at our schools.

Respectful engagement

It is expected that parents and carers and/or visitors to our schools will:

Parents and carers and/or visitors to our schools demonstrate this by:

Culture



- recognise every student is important to us
- contribute to a respectful school culture
- promote and model good behaviour
- work together with staff to resolve issues or concerns
- respect the right of staff to disconnect from work outside of school hours
- share responsibility in creating safe and secure learning environments

- respecting the diversity of our schools and the right to an education for every child
- always communicating respectfully about our schools and our staff
- not engaging in malicious or judgmental gossip in person, in writing, or on social media; about our students, staff and school community members
- raising concerns early with a staff member, the principal or the Department of Education directly
- understanding sometimes compromises are necessary, to find an acceptable solution to concerns raised
- understanding that obstacles, barriers and disappointments are part of the growth journey
- supporting children and young people to work through difficulties and build resilience

Communication



- be mutually respectful
- act as positive role models
- actively help to solve concerns
- use the school's communication channels and processes to address concerns

- appreciating that school staff may not be available to respond immediately
- knowing that staff will respond to appropriate communication when they are able
- requesting a meeting to discuss any concerns about your child's education — allowing staff time to prepare and appreciating their time may be limited
- not using offensive, insulting and derogatory language; and inappropriate conduct
- being kind when interacting with others

Collaboration



- work with the school to provide a safe and productive learning environment
- ensure your child attends school ready to learn
- know and support the school's Student Good Standing Policy
- schedule meetings at an agreed time, for an agreed purpose

- maintaining professional relationships that are open, honest and respectful
- taking responsibility for your child arriving and leaving school safely on time every day
- supporting your child to understand and follow the Student Good Standing requirements
- scheduling an appointment to meet with the teacher or principal

ABOUT OUR SCHOOL

Peel Language Development School (PLDS) supports students from Kindergarten to Year 3, and provides a nurturing 'school within a school' environment for students with a diagnosed DLD. Our school's Administration is onsite with Rockingham Lakes Primary School, and we have co-located classes at Bungaree, Mandurah and Pinjarra Primary School. Our school mirrors a mainstream school, with the addition of specialised language intervention and education program within smaller class sizes.



PLDS Administration
Rockingham Lakes PS Campus
26 Laguardia Loop, Port Kennedy 6172
Ph: 9523 7830
E-mail: Peel.LDS@education.wa.edu.au



Bungaree PS Campus
9 Centaurus Street, Rockingham 6168



Mandurah PS Campus
18 Hackett Street, Mandurah 6210



Pinjarra PS Campus
Dixon Avenue, Pinjarra 6208

IN MY CLASSROOM I SEE...

**My classroom Teacher/s
and Education Assistant**



PEOPLE WHO VISIT MY CLASSROOM ARE...

Speech Pathologists

Tanya Rose
Kristen Aird
Bronte Dubbelman
Dominique Colcott
Louise Wilson

Support Teachers for

- Oral Language
- Physical Education/Health
- Science
- The Arts

COMMUNICATION



Connect Community

We encourage you to access Connect, to stay up-to-date with school events, last minute notices, newsletters and all school communications.



Seesaw

Get your individual code from your Class Teacher and receive classroom updates.



Website

www.plds.wa.edu.au



Newsletter

Our school newsletter is distributed twice per term in weeks 5 and 10.



Email

Peel.LDS@education.wa.edu.au



Message U

PLDS uses the school message system Message U.
This is an automated, personalized SMS text system where texts are sent directly to parents' mobile phones.



Phone

9523 7830

PARENT MEETINGS IN 2025

ILP Parent Meetings - Term 1, Weeks 8 - 10
Parent Report Meetings - Term 3

PARENT INVOLVEMENT

We encourage all parents to be involved in all aspects of their child's school lives as this support is vital for the success of school programs.

PARENT HELP

Please talk to your classroom Teacher

PARENTS & CITIZENS GROUP

Please talk to the school campus Deputy

PLDS SCHOOL BOARD

Please talk to PLDS Admin to apply



If you wish to meet with the classroom Teacher and/or Administration, please write in your child's Communication Book or telephone the PLDS Administration Team on 9523 7830 to arrange a progress meeting.



IMPORTANT INFORMATION

Getting to School- School Bus Service

Children attending PLDS may be eligible to receive transport assistance by a contract school bus (PP-Year 3) or a conveyancing allowance (K- Year 3), which is paid to parents/carers. School Bus Services (SBS) will determine which form of transport assistance is appropriate and available to individual children. Applications for both the bus service and conveyancing allowance must be submitted online at www.schoolbuses.wa.gov.au. **Early submissions are strongly encouraged.**

An application does not guarantee placement on the bus and you will be notified by SBS of the outcome. The conveyancing allowance is only paid for days that your child attends; therefore parent/carers are advised to keep a record of your child's attendance and must be submitted online at the end of each term. Further information is available on the website, or call 9326 2528.

Student Records

Please keep us up-to-date with your family and child's information. If you change your address or phone number for home, work or emergency contacts, please get in touch with our school PLDS Administration Team on 9523 7830. This is important in case an emergency arises at school.

School Attendance

We want to give your child the best opportunities to learn, develop and grow. By Western Australian law, all school-aged children must attend school every day. If your child is absent, it is a legal requirement that you provide written evidence of dates and reason. This can be done through the Connect Community or our school website.

If you need to take your child out of school before official closure, you must obtain a Leave Pass. Please see campus specific information on where to obtain your Leave Pass. Please bring photographic identification with you (e.g. driver's license). Under 'duty of care', teachers will not release any child unless you have a Leave Pass.

Dress Code

Students will follow the uniform and dress code of their co-located school (e.g. Students attending Rockingham Lakes Campus will wear the Rockingham Lakes Primary School uniform). This helps students feel included and part of the campus.

Unwell Students

If your child is unwell, please do not bring them to school. If a child becomes ill or is injured at school, parents/guardians will be contacted and asked to take them home. Please arrange an emergency contact that is willing to look after your child when you are unavailable. In an emergency, a doctor or ambulance may be called (parent/guardian is responsible for payment). Please ensure your contact details are kept up to date at all times.

STUDENTS GOING TO ROCKINGHAM LAKES CAMPUS



Doors Open	8.25am
School Commences	8.40am
Lunch	10.50 - 11.15am
Recess	1.30 - 1.50pm
School Concludes	2.50pm

Children should not arrive before 8.15am to ensure safe duty of care supervision. Children arriving between 8:15 - 8:30am must wait outside the library. Use of play equipment before and after school is not permitted as Teachers are unable to provide duty of care.

Students Arriving Late

It is important that your child arrives to their classroom on time each day. If your child arrives late, they must go to the front office to complete a Late Note on the iPad.

Students Leaving Early

To take your child out of school before the official closure, you must go to the office to complete a Leave Pass.

Uniforms / Dress Code

The School Board has established a School Dress Code for all students. They have endorsed the following uniform items:

- School Polo Shirt & Rockingham Lakes Leavers Shirt (Yr 6 students) – a long sleeve navy shirt may be worn underneath the school polo shirt
- Navy Shorts, navy sports skirt, navy track pants, navy skort, navy pants* (no added colour, stripes or patterns)
- Rockingham Lakes jumper, zip jacket or vest
- School hat, available in faction colours, to be worn all year, as per the school's SunSmart policy which can be found on [Connect](#).
- Sneakers, shoes, or sandals with back strap
- Hair is to be worn neatly, clean and off the face (long hair will be tied back).
- Small stud earrings or sleepers in ears only, additional body piercings of any kind are not accepted.
- Medi-alert bracelets and watches are accepted (Smart Watches must be on airplane mode during school hours).
- Nail polish and fake nails are not to be worn.
- Make-up, necklaces and jewellery are not permitted (unless for cultural reasons approved by the Principal).

All students are expected to wear full school uniform every day.

The P&C supports the Dress Code by operating the Uniform Shop. Items can be purchased via [QuickCliq](#) at quickcliq.com.au.

"Be Proud"

Dental Clinic

Children attending this campus are entitled to free dental treatment at the Koorana Dental Clinic, at Koorana Primary School, 109 Coronata Drive, Warnbro. Phone 9593 4821.

Car Park

Please use the visitor car park on Laguardia Loop or allocated parking around the school. Take great care, cooperate and observe all traffic laws to ensure the safety of our children. The staff car park, disabled parking bays or bus bays are not to be used for drop off or pick up.

School Fencing

The school has security fencing around its perimeter, which will be unlocked at 8:15am and locked by 3.15pm. Please ensure that you have vacated the enclosed area by this time. If you are attending a class meeting or Teacher interview, arrangements will be made for your exit.

Canteen

Ordered through **QuickCliq at quickcliq.com.au**

We are an allergy aware school, so please do not send peanuts or food containing peanuts to school.

Allergy Aware

Every year there is a growing number of children with severe food allergies and we ask parents and carers to ensure the safety of all students with the school by making sure that no nut-based products, including spreads such as Nutella, are brought into school. Students with severe nut allergies can experience an anaphylactic response just by being in close vicinity to nuts so every student's lunchbox needs to be nut-allergy friendly.

"Be Proud"

STUDENTS GOING TO BUNGAREE CAMPUS



Doors Open	8.25am
School Commences	8.40am
Recess	10.30 - 10.50am
Lunch	12.40 - 1.15pm
School Concludes	2.45pm

Children should not arrive before 8.25am as there may not be supervision prior to this time. All students arriving early must sit in the undercover area until classroom doors open at 8.25am. Students and parents are not allowed to enter the wet areas prior to 8.25am. Use of play equipment before and after school is not permitted as teachers are unable to provide duty of care.

Early Withdrawal

To take your child out of school before the official closure, you must go to your child's classroom and complete a Leave Pass.

Uniform Shop

The Bungaree PS uniform price list is enclosed for your information and are ordered through the 'Spriggy Schools' app.

Contact Telephone Numbers

To contact the class teacher by phone, please ring the Rockingham Lakes Campus (9523 7830).

Dental Clinic

Children attending PLDS are entitled to free dental treatment at the Dental Therapy Unit, at Bungaree Primary School. Clinic hours are, 8am to 4pm Monday to Friday, **9527 5658**.

Car Park

Please use the marked parking areas at the school, follow the signs for correct use and speed limit of the school car park. The staff entrance, staff parking bays or bus bays, are not to be used for drop off or pick up. Gates from the car park to the classrooms are locked soon after the siren to begin school, and not unlocked again until just before the end of the day.

Canteen

Bungaree Primary School campus does not have a canteen, however, lunches can be ordered online through the 'Spriggy Schools' app on a Monday, Wednesday and Friday.

Allergy Aware

Every year there is a growing number of children with severe food allergies and we ask parents and carers to ensure the safety of all students with the school by making sure that no nut-based products, including spreads such as Nutella, are brought into school. Students with severe nut allergies can experience anaphylactic response just by being in close vicinity to nuts so every student's lunchbox needs to be nut-allergy friendly.

"Excellence Through Effort"

STUDENTS GOING TO MANDURAH CAMPUS



Doors Open	8.30am
School Commences	8.50am
Lunch	11.00 - 11.30am
Recess	1.40 - 2.00pm
School Concludes	3.00pm

Children should not arrive before 8.30am as the school gates do not open until then. Students arriving after 8:50am will be given a late note through the front office. Use of play equipment before and after school is not permitted as Teachers are unable to provide duty of care.

Students Leaving Early

To take your child out of school before the official closure, you must see the office on Hackett Street, to complete a Leave Pass.

Uniform Shop

The Mandurah PS uniform price list is enclosed for your information. Uniforms can be purchased from Perm-A-Pleat.

Dental Clinic

Children attending this campus are entitled to free dental treatment at the Meadow Springs Dental Clinic, at Meadow Springs Primary School, corner of Bellerive Pass and Oakmont Avenue, Meadow Springs. Clinic hours are 8am to 4pm, Monday to Friday, 9584 2478.

Car Park

Student drop-off and pick-up is at the rear of the school on Forrest Road. The staff car park on Hackett Street is not to be used for drop off or pick up.

Lunches

Children are able to order their lunch from Seabreeze Deli every day. All lunch orders need to be given to the teacher by 8.50am.

Allergy Aware

Every year there is a growing number of children with severe food allergies and we ask parents and carers to ensure the safety of all students with the school by making sure that no nut-based products, including spreads such as Nutella, are brought into school. Students with severe nut allergies can experience an anaphylactic response just by being in close vicinity to nuts so every student's lunchbox needs to be nut-allergy friendly.

We also ask that you do not bring birthday cakes to school due to these allergies.

"Motivate, Educate, Celebrate"

STUDENTS GOING TO PINJARRA CAMPUS



Doors Open	8.30am
School Commences	8.49am
Recess	11.05 - 11.25am
Lunch	1.25 - 2.00pm
School Concludes	3.00pm
EARLY CLOSE MONDAY	2.30pm

Children should not arrive before 8.15am to ensure safe duty of care supervision. Children who arrive between 8:15 - 8:30am must wait in the undercover area. Use of play equipment before and after school is not permitted as Teachers are unable to provide duty of care.

Students Arriving Late

It is important that your child arrives to their classroom on time each day. If you arrive at school after the siren in the morning you may be required to complete a late pass at the classroom door.

Students Leaving Early

To take your child out of school before the official closure, you must go to the classroom Teacher to complete a Leave Pass.

Uniform Shop

The Pinjarra PS uniform price list is enclosed for your information. Uniforms can also be ordered through **QuickCliq at quickcliq.com.au**

Dental Clinic

Children attending this campus are entitled to free dental treatment at Pinjarra Primary School. Appointments can be made by phoning the clinic directly on 9531 1846, Monday to Friday, 8.00am - 4.00pm.

Car Park

The staff carpark is strictly for staff and deliveries, and is not to be used for pick up and drop off.

Lunches

Children can order their lunch at the canteen or online through **QuickCliq at quickcliq.com.au**

Allergy Aware

Every year there is a growing number of children with severe food allergies and we ask parents and carers to ensure the safety of all students with the school by making sure that no nut-based products, including spreads such as Nutella, are brought into school. Students with severe nut allergies can experience an anaphylactic response just by being in close vicinity to nuts so every student's lunchbox needs to be nut-allergy friendly.

"We Achieve"

Preparing for School



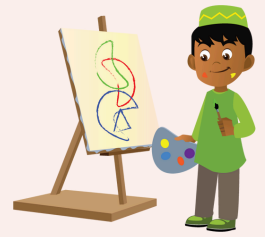
A bag big enough for a lunch box, water bottle, scrapbook, fruit for crunch and sip, and a spare set of clothes.



Label all items with first and last name- lunch box, water bottle, uniform, etc.



Kindy and Pre Primary stationery is shared and does not need to be labelled.



Material art shirts are better than plastic ones as they last longer and are more comfortable for the child.



Before your child starts the school year, drive or walk past the school and point out classrooms and playgrounds. This helps them see and understand what to expect on the first day of school.



Work on toilet training. Teach them how to dress and undress themselves, flush the toilet and wash their hands. Bring a spare pair of clothes as accidents happen.



Take your child to shop for their lunch box and school bag, etc. This will help them feel more excited about school.



Practise opening and closing lunch boxes and zips on clothing, school bag, etc.



To make the first day of school easier, give your child a quick kiss, hug and wave goodbye. Make sure you let them know that you will be back at the end of the day to pick them up.



Show interest in anything your child does at home and at school. Praise their efforts.



Ensure your child gets enough rest and a healthy diet.



Send your child to school regularly and on time.

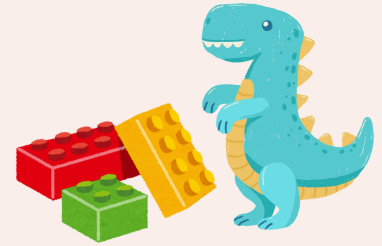
Preparing for School



Designated staff can only give your child **medication** if it is in a box with the pharmacy label on it, and if you fill out the paperwork to do so.



If you have any children's **books** (new or used in great condition) that you can donate, we would greatly appreciate putting it into the 'book corner' of our classroom.



Children are not allowed to bring **toys** to school, unless it is for news time. News time toys will be kept in the classroom.



On the **first day** of school, your child should bring:

- drink bottle
- wide brim hat
- art shirt (long sleeve)
- a library bag
- spare set of clothes



Send a named **water bottle** into class with your child. No juice or cordial please.



Head lice are extremely contagious. You will need to pick your child up from school if head lice or nits are found on them.



Please **do not send** your child to school if they have the following:

- high temperature
- skin rash that is not diagnosed or not being treated
- inflamed eyes
- sore throat and/or cough
- vomiting or diarrhoea
- runny nose
- head lice

Useful junk items

The classroom Teacher may request for household items, which activities use. Some items are:

- washed ice cream, yogurt, butter containers with lids
- patty pans
- knitting wool
- cotton reels
- fabric scraps, lace, ribbon or felt
- big jars with lids
- dress up clothes, shoes, hats, bags
- shoe boxes
- wrapping paper
- aluminium foil
- balloons
- beads
- boxes (tissue, cereal, toothpaste, etc.)
- bottles (plastic)
- cards
- carpet squares
- cake tins
- tin cans
- seashells
- cellophane
- corrugated paper/cardboard
- cardboard tubes (not toilet rolls)
- buttons
- costume jewellery
- Easter egg wrappers
- egg cartons
- foam scraps
- paper/plastic cups, plates, etc.
- pipe cleaners
- sandpaper
- sponges



YOUR CHILD'S JOURNEY THE YEAR BEFORE SCHOOL

Child Health Nurse

This is a great time to visit your Child Health Nurse for a developmental check up and to make sure your child's immunisations are up to date. You will need to provide a copy of your child's Australian Immunisation Register.



Encourage and support your child's listening and speaking skills

- Play together
- Get down to their eye level, ask questions, make comments and take turns
- Read books together
- Talk about your routines (i.e. bath time, going to the park, cooking dinner, etc.)



Local Library and Recreation Centres

There are a range of community centres and services that provide a range of activities for children. See our community services contact list in this booklet.



Child & Parent Centre

These centres offer a range of easily accessible programs and services for you and your family, including early learning programs, maternal and child health services, and child support services.

Centres that are in our catchment areas are located at Calista Primary School, East Waikiki Primary School and Dudley Park Primary School.



FREQUENTLY ASKED QUESTIONS

What are Language Development Schools (LDS)?

LDS are part of the Education Department of Western Australia that cater for children with a diagnosed DLD. There are five LDS in the Perth metropolitan area, each has a specific catchment area, divided into South West, South East, North East, North West and Peel regions.

The LDS's are all located on the site of a mainstream primary school. This enables the children to receive a specialised language intervention programme in a regular school environment, on an intensive basis. The program is for an identified population of children with typically developing intelligence whose academic and social performance is limited by significantly delayed/disordered language development.

How much does it cost?

The LDS are a government funded education facility and fees are kept to a minimum.

Can a child attend part-time?

No, in order for a child to gain maximum benefit from the placement students are required to attend on all the days their year level operates. Kindergarten = 5 days per fortnight, PP - Y3 = 5 days per fortnight.

If I choose not to send my child to the LDS are there any other options for support?

The Department of Education is committed to providing the best learning environment for every child therefore a range of placements and services are available for children who are having difficulty learning. These largely focus on the mainstream school developing a program under the Students at Educational Risk (SAER) strategy. It is best to discuss this with your child's local school staff, including the Principal, Teacher and School Psychologist.

How many places are available at the LDS?

Acceptance is dependent upon the number of places available in any given year, and the number of children referred each year.

What classes are there at the LDS?

Peel LDS currently has children enrolled from Kindergarten to Year 3.

FREQUENTLY ASKED QUESTIONS

WHAT HAPPENS AT PEEL LANGUAGE DEVELOPMENT SCHOOL (PLDS)

Is a LDS like a mainstream school?

Peel Language Development School is co-located at four sites, Rockingham Lakes, Bungaree, Mandurah and Pinjarra Primary School. Whilst the LDS has many similarities to a mainstream school, the overall focus is on early intervention, and language development within the WA curriculum. The aim of the program is to exit children back into their mainstream school therefore teachers follow the West Australian curriculum to assist with a smooth transition. A wide range of teaching techniques and resources are used, these include specific language activities, individual and small group work.

How big are the classes?

Class numbers are kept lower than mainstream schools, with extra support from Education Assistants.

Are the Teachers specially trained?

Teachers participate in intensive professional development programs to ensure they have current knowledge and skills in the area of language development.

Do the PLDS children integrate with mainstream children?

PLDS children integrate with the mainstream children for whole school activities such as assemblies, sports carnivals and incursions. The children share playground facilities and staff share duty rosters and the staffroom.

How will my child's progress be reviewed at PLDS?

Each child's language development and curriculum progress is reviewed continuously throughout the year. Parents and carers are encouraged to be partners in their child's progress.

Each semester teachers report to parents in the form of meetings, work sample packages, Curriculum Reports and ILP (Individual Language Plan) reviews. Parents are welcome to make appointments to meet with teachers to discuss their child's progress throughout the year.

FREQUENTLY ASKED QUESTIONS

How long will my child stay at PLDS?

Once a child is accepted into PLDS they will continue their schooling with us until they exit the program. The decision to exit a child is made collaboratively and there are many factors that influence this decision. Students accepted into the program may be subject to review and further testing for entrance to the proceeding year if necessary.

The length of time a child remains at PLDS is dependent upon the child's needs and ability to access the program. Each child's place at the LDS is constantly monitored to ensure their learning needs are best met by the program. Places are offered in good faith that all information has been supplied and that any new information that may affect a child's ability to learn is submitted as soon as possible. The withholding of information may compromise the application process and a child's place within the program. It also greatly hampers the school's ability to meet a child's individual learning needs.

Can I be involved in PLDS Program?

The staff at PLDS believe that children cannot achieve their potential without the support and involvement of parents, therefore parental involvement is vital in our program. The school runs parent workshops throughout the year and all teachers encourage parent help in the classroom. There is an active School Board and combined school P&C for parents to become involved in. The school encourages parents to make contact with each other in order to provide support and friendship.

Do I have to transport my child to PLDS?

Language Development Schools are recognised as education support facilities by the Department of Transport who provides bus transportation to children living outside a 6km radius of the school. The children are picked up from home in the morning and dropped off at home in the afternoon. A Bus Aide supervises the children on the bus journey. Some parents choose not to access this option so there is a scheme to help offset the costs should a parent decide to transport the child to school themselves. All decisions on transport issues are made by the School Bus Service (SBS) of the Department of Transport.

Do they wear a uniform at PLDS?

All LDS are located on the site of a mainstream primary school. PLDS students are required to follow the uniform and dress code of their co-located school.

FREQUENTLY ASKED QUESTIONS

What type of Speech Pathology services are provided at PLDS?

At PLDS Speech Pathologists work collaboratively with parents, outside agencies and school staff. Teachers and Speech Pathologists collaboratively plan to ensure that the children's language needs are met in the classroom and within the home practice program. Speech Pathologists also assess the children's language, set individual language goals and work in classrooms alongside the Teacher.

Will my child get individual Speech Therapy at PLDS?

There is no individual Speech Therapy at PLDS. Children with dyspraxia/phonology/articulation problems may work with Teachers and EA's under the direction of a Speech Pathologist. Speech Pathologists at PLDS do not provide individual speech therapy.

Will my child receive other therapy at PLDS (OT/Physio)?

Children who require other therapy services (eg. Occupational Therapy, Physiotherapy) will need to access these through local community based services or in the private sector. This should be arranged by the parents after discussion with PLDS staff. Increasingly – many providers will come to school to see students.



FREQUENTLY ASKED QUESTIONS

WHAT HAPPENS WHEN MY CHILD LEAVES PLDS?

How will I know when my child is ready to leave?

There are a number of factors that determine when an individual child is ready to leave PLDS. Some children make sound progress and will transition to their mainstream school before Year 3 however, most remain and leave at the end of Year 3. For other children, their language disorder may no longer be the primary difficulty and an alternative placement may be sought.

What are the outcomes for students with language disorder?

Research suggests that receptive and expressive language disorders may persist into adolescence and adulthood, impacting significantly on literacy development and academic performance. When your child exits PLDS, you will be provided with a comprehensive Speech Pathology Transition Report which will outline the future recommendations for your child.

What will happen to my child after they leave PLDS - where will they go?

The most common recommendation is for your child to attend their local Government school with collaboration from PLDS for the first year of transition between the LDS and the home school.



PREPARING FOR SCHOOL IS THE KEY TO HAPPY KIDS

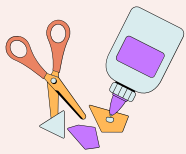


Get enough sleep

Make friends and play together



Have a go at classroom crafts



Eat healthy



Enjoy books together



Practise getting dressed independently



Make use of playgrounds and parks



Talk about feelings



Toilet training



Practise speaking and listening



HAVING A SUCCESSFUL SCHOOL YEAR



Please **drop your child off** to their classroom in the morning, and wait outside the classroom door to **collect your child** at the end of the day. If anyone other than the parent/caregiver is going to collect your child, please let us know in writing.

At drop off, give a big smile, hug and say '**See you at the end of the day**'.
Don't extend the goodbye even if your child is upset.

Talk to your child's classroom Teacher about what's challenging so they can help your child- i.e. lack of sleep, family circumstances, etc.

For **custody issues**, please provide the relevant court orders and documentation to PLDS admin.

To provide children with **independence and self management skills at school**, you are encouraged to teach your child to take responsibility to learn, settle conflict in a peaceful manner, and be sensitive and kind to the needs and feelings of others.



To help your child remove and replace their own **footwear** and socks, shoes with velcro fastenings are encouraged.

We have a Sun Smart policy. Children need a broad brimmed bucket style hat to play at recess and lunch, or they will be required to sit under the veranda.



Stationery in Kindy and Pre Primary is shared and doesn't need to be labelled.



Parent help is a great way to learn more about your child's classroom and routines while spending special time with your child. The classroom Teacher will let you know when the roster for parent help starts. On the day of parent help, report to the office to sign the Visitor's Book and obtain a badge.

Lost property is found at Block 2 for the Rockingham Lakes Campus. For Bungaree, Mandurah and Pinjarra Campuses, please see your Classroom Teacher.

HEALTHY LUNCHES

A healthy diet is really important for growth, development, mental and emotional well being. When coming to school, children should be provided with a nutritious lunch and recess. Each day children need something for lunch (main meal), something for recess (mini meal), something to munch (fruit or vege) and water to drink.

THE MAIN

Pack a substantial meal from the five food groups. This can include a sandwich, wrap or alternatives such as sushi, pasta, curry, falafel or any dinner leftovers.

Remember to add an icepack to keep food safe.

Main



Mini



THE MINI

Pack smaller portions of the five food groups. This can include slices of cheese, hard boiled eggs, homemade muffins, tinned tuna, popcorn, grainy crackers or dips.

Munch



Water



THE MUNCH

Pack any fruits or vegetables that your child enjoys. Pick seasonal to save money and encourage variety.

WATER

Always pack water for your child.

KWINANA COMMUNITY SERVICES AND PROGRAMS

Health Services

Kwinana Child Health Centre	1 Peel Row Kwinana Town Centre 6167 08 9419 2266	Maternal, child and family health Indigenous health
NGALA Child and Parent Centre – Calista	Harlow Road, Calista 6167 Located at Calista Primary School 8:30am - 4:00pm 08 9367 0960 https://www.ngala.com.au/location/child-and-parent-centre-calista/	Weekly playgroups (during school term) Child Health Services Parent Meet Ups and Support Parenting Programs and Workshops
Relationships Australia	Level 1, Darius Wells Library & Resource Centre 2 Robbos Way, Kwinana Town Centre 6167 (08) 6164 0500 https://www.relationshipswa.org.au/	Counselling Mediation Aboriginal Community Support Family & Domestic Violence Parenting & Family Relationships Mental Health Personal Development CaLD Services

Playgroup

Moorditj Kulungar Playgroup	26 Bolton Way, Orelia 6171 Fran 0428 208 196 https://www.kwinana.wa.gov.au/community/families-and-children/moorditj-kulungar-playgroup email: programs@kwinana.wa.gov.au	Every Tuesday 9.30am - 12pm during school term Outdoor play, intergenerational activities, crafts, songs, stories Educational activities about language and culture Ear health checks
Little Messy Learners Kwinana	https://littlemessylearners.com.au/	Educational messy play classes for babies to preschoolers Painting, play dough, scribbling, dance and more
Kwinana Early Years Services (KEYS)	Darius Wells Library and Resource Centre (08) 9439 1383 email: info@keyswa.org.au https://www.keyswa.org/	Playgroups for children 0-5 y.o., parent workshops and seminars, family support and counselling

KWINANA COMMUNITY SERVICES AND PROGRAMS

Library Services

Kwinana Public Library	Located within the Darius Wells Library and Resource Centre Corner of Robbos Way and, Chisham Ave, Kwinana Town Centre 6167 (08) 9236 4300 email: library@kwinana.wa.gov.au https://www.kwinana.wa.gov.au/library#	Library Membership Activities & Services for Children Justice of the Peace Learn English
Darius Wells Library and Resource Centre	Corner of Robbos Way and, Chisham Ave, Kwinana Town Centre 6167 (08) 9236 4300 https://www.kwinana.wa.gov.au/dariuswells#3	Programs, Activities & Events Toddler Town Crèche Hireable Spaces

Aquatic Centre

Kwinana Recquatic	Skerne St &, Robbos Way, Kwinana 6167 (08) 9236 4700 https://recquatic.com.au/	Swim School Aqua Playgroup 1-4 years
State Swim Kwinana	6/46 Meares Ave, Kwinana Town Centre 6167 (08) 9419 2835 email: kwinana@stateswim.com.au https://www.stateswim.com.au/our-swim-schools/kwinana/?utm_source=google&utm_medium=organic&utm_campaign=gmb-wa-kwinana	Learn to Swim Swim & Play 6 months+ Baby & Toddler Programs

PEEL AND ROCKINGHAM COMMUNITY SERVICES AND PROGRAMS

Health Services

Ameer Street Child Health Centre	Unit 1-4, 8-10 Ameer Street ROCKINGHAM 6168 (08) 9528 0800	Maternal, child and family health service
Child and Parent Centre East Waikiki	East Waikiki Primary School Cnr Murchison Road and Carnegie Loop Cooloongup 6168 9367 0967 https://childandparentcentres.wa.edu.au/east-waikiki/	Child Health Nurse Speech Pathology Early parenting groups (Triple P, Protective Behaviours, Circle of Security) Playgroups Counselling Service Connection to community services
South Coastal Health & Community Services	Lifelinks Building 4 Civic Boulevard, Rockingham, Western Australia, 6168 (08) 9550 0900 https://www.southcoastal.org.au/ email: referrals@southcoastal.org.au	Aboriginal health services Counselling Dietetics Early Childhood Centre GP Services Psychology Visiting Services
The Parents Place	63 Ormsby Terrace, Mandurah WA 6210 1300 749 869	Drop in service Tuesday 9.30 - 11.30am CHN or parenting support Thursday - nurse or parenting support

Playgroup

Westerly Family Centre	27 Westerly Way, Cooloongup 6168 (08) 9592 3650 http://westerlyfamilycentre.com.au email: info@westerlyfamilycentre.com.au	Playgroup and Childcare Parenting workshops Community events
Warnbro Community and Family Centre	1 Moreton Crescent, Warnbro 6169 (08) 9593 3027 email: info@warnbrocfc.com.au Facebook- Warnbro Community and Family Centre	Playgroup Parenting workshops Community events

PEEL AND ROCKINGHAM COMMUNITY SERVICES AND PROGRAMS

Library Services

Darius Wells Library and Resource Centre	Chisham Ave and Robbos Way, Kwinana Town Centre 6167 (08) 9236 4320 email: community.centres@kwinana.wa.gov.au	<p>Toy Library (RCL only) Better Beginnings Family Literacy Program</p> <p>Rhyme Time (0-2y.o.) Toddler Time (1- 2.5 y.o.) Story Time (2-5 y.o.)</p>
Mary Davies Library and Community Centre	17 Settlers Avenue, Baldivis 6171 (08) 9591 0800 email: mdlcccontact@rockingham.wa.gov.au	
Rockingham Central Library	Dixon Road, Rockingham 6168 (08) 9528 8683 email: rclcontact@rockingham.wa.gov.au	
Safety Bay Library	197 Safety Bay Road, Safety Bay 6169 (08) 9428 8611 email: sbycontact@rockingham.wa.gov.au	
Warnbro Community Library	Swallowtail Parade, Warnbro 6169 (08) 9528 8577 email: wclcontact@rockingham.wa.gov.au	

Aquatic Centres

Aqua Jetty	87 Warnbro Sound Avenue, Warnbro 6169 (08) 9591 0888 https://rockingham.wa.gov.au/facilities-and-recreation/aqua-jetty/about-aqua-jetty email: aquajetty@rockingham.wa.gov.au	Aquatic Centre Aqua Jetty Swim School (6 months+)
Rockingham Aquatic Centre	Council Avenue, Rockingham 6168 (08) 9591 0830 https://rockingham.wa.gov.au/facilities-and-recreation/facilities/aquatic-centre email: customer@rockingham.wa.gov.au	Aquatic Centre Learn to Swim program (4 y.o. +)
Jump! Swim Schools Port Kennedy	Lot 3, 21 Jacquard Way, Port Kennedy 7182 (08) 9524 5544 https://jumpswimschools.com.au/	Swimming Lessons (3 months+)

MANDURAH COMMUNITY SERVICES AND PROGRAMS

Health Services

Mandurah Child Development Service	112 Lakes Road, Greenfields 6210 (08) 9586 4401	Maternal, child and family health service
Child and Parent Centre Dudley Park	Dudley Park Primary School 64 Gilark Street, Dudley Park 6210 (08) 9537 5603 https://childandparentcentres.wa.edu.au/dudley-park/	Child Health Nurse Speech Pathology Early parenting groups (Triple P, Protective Behaviours, Circle of Security) Playgroups Counselling Service Connection to community services
Nidjalla Waangan Mia	112 Lakes Road, Mandurah 6210 (08) 9586 4580	Aboriginal health and wellbeing centre providing nursing, diabetes education, maternity support and outreach
South Coastal Women's Health	4 Civic Boulevard, Rockingham 6168 (08) 9550 0900 http://www.southcoastal.org.au email: referrals@southcoastal.org.au	Supports the physical and mental health needs of women, families and community. Babbingur Mia program for Aboriginal women's and children's health.
The Parents Place	63 Ormsby Terrace, Mandurah 6210 1300 749 869	Drop in service Tuesday 9:30 – 11:30am CHN or parenting support Thursday-nurse or parenting support

Playgroup

Little Messy Learners Mandurah	Multiple locations around Rockingham and Mandurah https://littlemessylearners.com.au/ email: jenny@littlemessylearners.com.au	Educational messy play
---------------------------------------	---------------------------------------------------------------------------------------------------------------------------------------------------------------------------------------------------------------------------------------------	------------------------

MANDURAH COMMUNITY SERVICES AND PROGRAMS

Library Services

Lakelands Library and Community Centre	Lakelands Shopping Centre, 49 Banksiadale Gate, Lakelands 6180 (08) 9550 3835	Rhyme Time (0-2y.o.) Story Time (all ages)
Mandurah Library	(08) 9550 3650 331 Pinjarra Road, Mandurah 6210 email: manlib@mandurah.wa.gov.au	
Falcon eLibrary and Community Centre	Cnr Flavia St and Cobblers Rd, Falcon 6210 (08) 9550 3230	

Aquatic Centres

Halls Head Recreation Centre	16 Camp Rd, Pinjarra 6208 (08) 9531 2000 Murrayleisurecentre.com.au	Aquatic Centre Swim School (6 months+)
City of Mandurah MARC	303 Pinjarra Rd, Mandurah 6210 (08) 9550 3600 https://www.mandurah.wa.gov.au/community/places/aquatic-and-recreation-centres	Aquatic Centre Swim School (6 months+)
Westswim Lakelands	Lakelands Shopping Centre 49 Banksiadale Gate, Lakelands 6180 (08) 6143 4511 Westswim.com.au	Swim Classes (4 months+)

PINJARRA COMMUNITY SERVICES AND PROGRAMS

Health Services

Child Development Service Pinjarra

Murray District Hospital
McKay Street PINJARRA 6208
08 9531 7222

Maternal, child and family health

Library Services

Murray Library

1906 Pinjarra Rd, Pinjarra 6208
(08) 9531 7712
email: libraries@murray.wa.gov.au
<https://www.murray.wa.gov.au/places-and-spaces/murray-library>

Library Services
Technology Centre
Adults & Kids Programs
Events

Murray Toy Library

Pinjarra Hospital Grounds, McKay St, Pinjarra 6208
0408 952 453
email: mtlpinjarra@gmail.com
<https://murraytoylibrary.setls.com.au/>

Borrow a variety of toys, puzzles and games

Aquatic Centres

Murray Aquatic & Leisure Centre (MALC) Pinjarra

16 Camp Rd, Pinjarra 6208
(08) 9531 2000
email: info@themalc.com.au
<https://www.themalc.com.au/>

Learn2Swim Program
Gym Kidz Program
Facility Hire

GENERAL SERVICES AND SUPPORT

Parent Support

Anglicare	1300 11 44 46 Family Relationship Centre (08) 9583 1400 Victim Support Service (Court House) (08) 9583 1410 https://www.anglicarewa.org.au/	Parenting and family support
Communicare	Family Support Network: 1300 951 190 Connect and Respect- (08) 9439 5517 Settle In- (08) 9251 5777 http://communicare.org.au	Enabling and supporting child, youth and family wellbeing and development.
Ngala Parenting Line	113 Read St, Rockingham 6168 (08) 9368 9368 Parenting Line- (08) 9368 9368 (metro) OR 1800 111 546 (regional) http://www.ngala.com.au	Online parenting workshops Parenting consultations (at a charge) Parenting phone line to discuss any concerns from 0-18 y.o.
Parenting Connection WA	https://parentingconnectionwa.com.au/	Partnership between Ngala, Anglicare WA and Wanslea, support families from 0 – 18 to provide workshops, consultation and information.
Playgroup WA	(08) 9228 8088 or 1800 171 882 hotline@playgroupwa.com.au http://www.playgroupwa.com.au	Playgroup WA helps you find a suitable group for you and your family.
Peel Youth Services	(08) 9581 3365 https://www.peelyouthservices.org.au/ceo@pys.org.au	Support for individuals and parents under 25 to get support, information and counselling.
Relationships Australia	Darius Wells Library and Resource Centre (08) 6164 0500 relationshipsaustralia.org.au	Family support, counselling for all ages.
Rockingham Early Years Group	(08) 9528 0333 email: customer@rockingham.wa.gov.au Facebook- Rockingham Early Years Group 2020	Child and family focused network which seeks to improve the quality of all children (0-8 y.o.) in the Rockingham region.
Triple P (Positive Parenting Program)	Multiple Locations contact@triplep.net https://www.triplep-parenting.net.au/	Free Triple P Seminars to help make raising kids easier.

GENERAL SERVICES AND SUPPORT

Parent Support

WA Mums Cottage	Garden Café/ Op Shop (08) 9595 1670 Cottage (08) 9500 5486 25 Davey Street, Mandurah 6210 https://wamumscottage.org.au/wamumscottage@gmail.com	Mon – Fri, 9:30am – 2:30pm Drop-in centre for women and children facing challenges such as poverty, mental health and family domestic violence.
Wanslea Early Learning and Development Rockingham	1 Sepia Court, Rockingham 6168 (08) 9500 9080 26A Anstruther Rd, Mandurah 6210 (08) 9245 2441 childcare@wanslea.asn.au	National Disability Insurance Agency (NDIA) partner that delivers Early Childhood Early Intervention support for 0-6 y.o.

Mental Health Support

Lifeline	13 11 14 https://www.lifeline.org.au/	24-hour phone, text or online chat support to people in crisis.
Kids Help Line	1800 55 1800 https://kidshelpline.com.au/	24-hour phone and online counselling support for 5 - 25 y.o.
Helping Minds	Metro- (08) 9427 7100 Regional- 1800 811 747 https://helpingminds.org.au/	Free support to family and friends living with mental health challenges across WA.

USEFUL WEBSITES

Websites		
Australian Breastfeeding Association	https://www.breastfeeding.asn.au/	Information and support for mothers to establish and continue breastfeeding.
Be You	https://beyou.edu.au/	Information and resources to promote mental health and wellbeing (early years – 18 y.o.).
Child Now	https://www.childrennow.org/	Whole child approach covering the full range of key children's issues from prenatal through age 26.
Nature Play	https://www.natureplaywa.org.au/	Ideas and resources to encourage kids to play outdoors.
Pregnancy, Birth and Baby	https://www.pregnancybirthbaby.org.au/	Support for parents and information about pregnancy and raising children.
Raising Children Network	https://raisingchildren.net.au	Information about parenting, raising children and families.
The Bub Hub	https://www.bubhub.com.au/	Pregnancy advice, baby info, parenting tips and links to services.
The Fathering Project	https://thefatheringproject.org/	Inspire and equip fathers and father-figures to positively engage with the children in their lives.
Zero to Three	https://www.zerotothree.org/	Information to ensure babies and toddlers benefit from the early connections that are critical for development and wellbeing.



**Peel Language Development School
26 Laguardia Loop
Port Kennedy
Whadjuk Budjar, Noongar Nation
WA 6172**

**Phone: 9523 7830
E-mail: Peel.LDS@education.wa.edu.au
Website: www.plds.wa.edu.au**